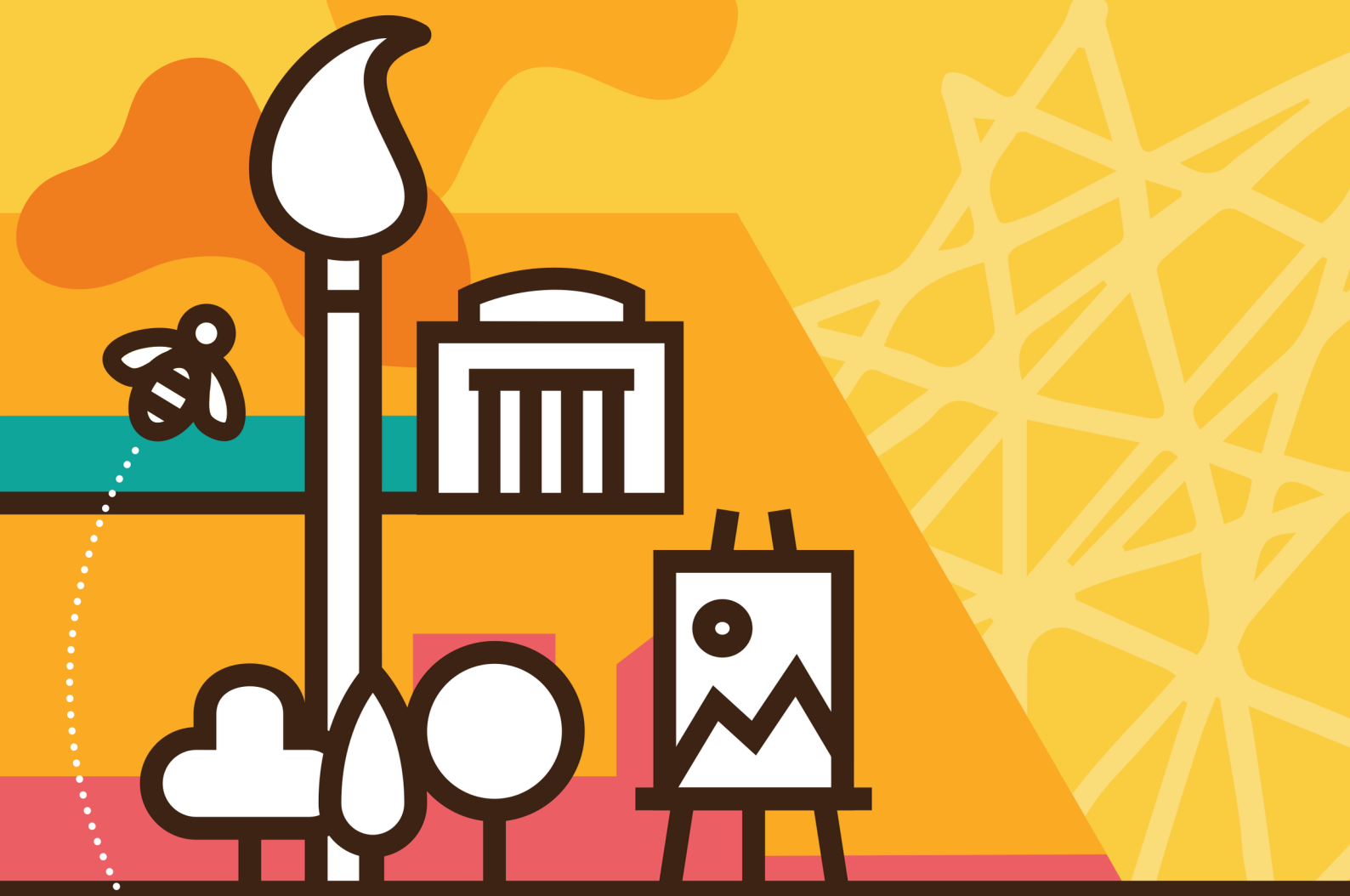




Bee in the City

Art Sculpture Trail

Bee part of our Learner Programme



A Wild in Art event brought to you by the Life Flight Trust



Presented by



Kia ora

Dear Educators,

We're excited to invite you to take part in an event that will bring Wellingtonians together through creativity, community, and connection. This is a chance for your daycare, school, intermediate, college, or community group to showcase your creative talent in a feel-good, city-wide project.

Bee in the City is a free public art event featuring 30 giant bee sculptures, each uniquely painted by an artist and sponsored by a local business, taking over Wellington's streets, parks, and playgrounds for an 8-week walking trail in Spring 2026. They'll be joined by 20+ medium bees designed by learners—your school or group could be part of this!

The trail will boost Wellington's social, cultural, and economic growth, turning streets and venues into an open-air gallery that brings joy to all. Medium Bees will be displayed indoors in public spaces and returned to your group after the event, while the giant sculptures will be auctioned to raise funds for Life Flight Trust, your local Westpac Chopper and Air Ambulance service.

Get inspired, get creative, and join the hive!

Spots for schools and community groups are limited—reserve your medium Bee today.



Bee part of the Learner Programme

Participation Fee

To cover the cost of the bee model, we require a \$300 + GST deposit to secure your spot, followed by a commitment to fundraise an additional \$700 throughout 2026 for Life Flight.

Participating schools/groups will receive:

01 Medium Bee

- A blank 3D fibreglass medium sized Bee sculpture for your group to decorate and design. These are approximately 0.8m x 0.8m and weigh 15kgs.

02 inspiration Event for 2x teachers

At this event we'll give you guidance on how to get your group involved and top tips on bringing your Bee to life. This will be hosted at our Life Flight Trust Airbase, so you'll also get an exclusive tour of our working base and any available aircraft present.

03 Visibility on the Trail

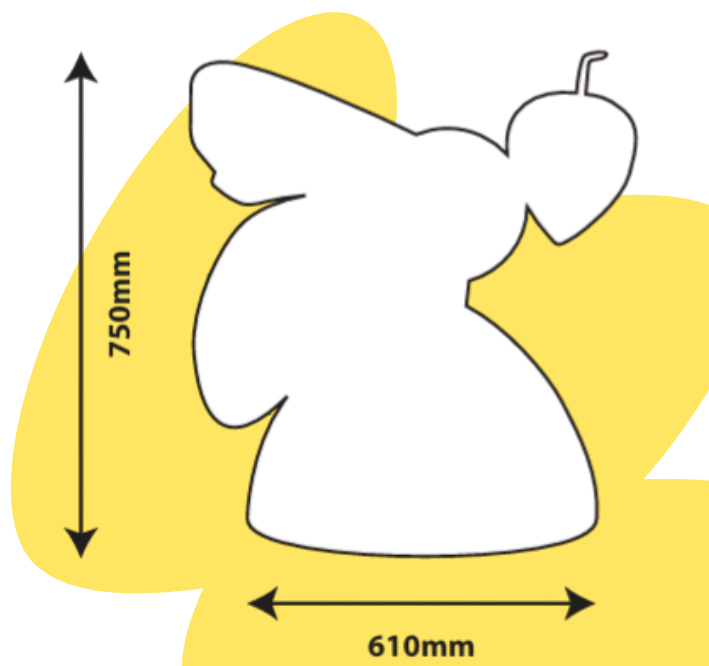
- Inclusion in the high-profile city-wide art trail, with your sculpture featured in the app, website, and trail map.
- A plaque next to your sculpture

04 A cross-curricular learning resource pack

- With lesson plans, and activities for you to integrate into your Term 2, 2026 classrooms

05 The bee at the end of the trail

- Your bee will be returned to your school as a lasting keepsake of the project.



Timeline

Until 19th December 2025

Registration for 20 learner packages - available on first come first served basis upon payment of participation fee

15th April 2026

Information briefing sessions for 2 staff from each participating school or group
Sculptures available for collection*

20th April 2026

Painting Commences

19th June 2026

Sculptures to be completed and returned to Life Flight Trust

September - November 2026

Sculptures exhibition in venues throughout Wellington CBD

End November 2026

Sculptures available to be returned to schools and community groups

*We rely on overseas shipping so this date may change, we'll keep you up to date on their arrival and collection point.



The background is a solid orange color. It features several abstract yellow shapes: a large, irregular blob in the upper half, a small circle in the middle right, and a partial circle at the bottom right.

Project Background



About Life Flight

Life Flight is a 24/7 emergency Air Ambulance and Westpac Chopper service, dedicated to saving lives across New Zealand. Each year, we fly over 1,700 missions to deliver critical care where it's needed most. Our mission is simple: to save lives by saving time.



Our impact

Since 1975, we have flown over 40,000 Kiwis, and in the next 10 years, we expect to fly over 20,000 more who need urgent care. But we can't do it without your support.

- Demand for Life Flight's services has increased by 25% over the past 12 months, meaning we need to raise more funds than ever.
- Approximately 25% of our missions are for babies and children who need time critical medical care.
- This art trail presents an innovative opportunity to help raise these life-saving funds—while giving back to the community that has supported us for the past 50 years.

About our partnership with **Wild in Art**

Wild in Art is a leading producer of creative events that transform places into free, family friendly, outdoor art galleries. They believe passionately in the importance of creativity, and purposefully design their events to enable as many people as possible to be involved.

You may be aware of previous trails done in partnership with Wild in Art:

- Laura Fergusson Trust | **Elmer's Ōtautahi Elephant** | Christchurch 2023
- WWF | **Whale Tales** | Auckland 2022
- Child Cancer Foundation | **The Big Hoot** | Auckland 2018

Happily, Wild in Art has partnered with charities on over 150+ trails globally, and we are pleased to receive their knowledge and expertise to make this trail a success.

The Bee in the City Trail will be a vibrant, city-wide showcase in Wellington, generating excitement, connecting communities and businesses, and offering artists an unparalleled opportunity to engage with the public and make a lasting creative impact.





Why an art trail?

Life Flight has seen a 25% increase in demand for our services over the last 12 months, and need to raise more funds than ever.

This art trail is an innovative opportunity to help raise these life-saving funds, all while giving back to the community that has supported us for the last 50 years.

This world-class art sculpture trail brings together the community, businesses, charities, and fundraising efforts, all while having fun!



"The creativity these children have is amazing: the colours, the designs, the artwork, and more importantly to be able to connect together."

- Lord Mayor, Manchester, UK

Bee involved

Don't miss your chance to be part of Bee in the City 2026! Spaces are limited and allocated on a first-come, first-served basis.

- Visit our website and register your school or community group
- Secure your spot by paying the \$300 + GST deposit per school or group



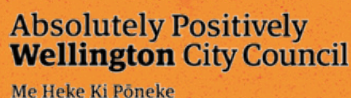
Presenting Partner



App Sponsor



Official Supporters



Sculpture Sponsors



Join the buzz!
Get in touch
today

Caroline Lee
Project Manager
caroline@lifeflight.org.nz

#beeinthecity
www.beeinthecity.org.nz